

GC Briefing

October 11, 2018

Weather Sentinel Tropical Storm Michael

After making landfall as a high-end category-4 hurricane on the Florida Panhandle, Michael weakened to tropical storm status early this morning. Michael now sits about 40 miles west-northwest of Columbia, South Carolina and is moving rapidly to the northeast. Michael should clear the Atlantic coast tonight. Ongoing hazards include tropical storm wind conditions, storm surge in the Carolinas and heavy rain with flooding. Initial media reports indicate severe to complete damage for certain areas of the Florida Panhandle along and near the track of the storm.

Status at 8 AM EDT (12 UTC) Today (NHC)

Maximum Sustained Winds: 50 mph
Approximate Location: About 40 miles west-northwest of Columbia, South Carolina
Motion: Northeast at 21 mph
Minimum Central Pressure: 986 mb
Extent of Tropical-Storm-Force Winds from the Center: 160 miles
Status: Tropical Storm

Discussion

- According to advisories of the National Hurricane Center (NHC), Hurricane Michael made landfall yesterday on the Florida Panhandle near Tyndall AFB between Mexico Beach and Panama City Beach. Landfall occurred around 12:30 PM CDT (1730 UTC), at which time the NHC reported maximum sustained winds of 155 mph, a high-end category-4 hurricane on the Saffir-Simpson Scale. The minimum central pressure at the time of landfall was 919 mb. According to NHC statements this is the third-lowest pressure in recorded history, and the strongest landfalling hurricane since Andrew (1992), for a hurricane making landfall in the continental U.S.
- The most severely affected areas of the coast are still inaccessible, however initial media reports indicate severe to complete damage for near-coastal regions for areas including eastern Panama City and Panama City Beach, and Mexico Beach. Catastrophic wind damage has been reported including roof and wall failure for both residential and commercial properties, especially for cinder-block construction, and with some damage also reported for engineered structures. Near-coastal areas of Mexico Beach have been scoured clean due to storm surge and wave battering, according to initial media reports, with areas further inland showing severe to complete damage due to wind. Downed trees and powerlines have been reported over widespread areas along with resulting power outages.
- Michael weakened considerably following landfall and was downgraded to tropical storm status at 12 AM EDT (04 UTC) October 11.
- The center of Michael is now located about 40 miles west-northwest of Columbia, South Carolina and carries maximum sustained winds of 50 mph. The storm is moving rapidly to the northeast at 21 mph, and this motion is expected by the NHC to continue with an increase in forward speed. This should take the center of the storm through the Carolinas and southeastern Virginia before clearing the Atlantic coast tonight. The storm should maintain intensity before gaining strength tonight due to interaction with cold air of another frontal system. This is a large storm and hazards extend well away from the center of circulation.

- The NHC maintains tropical storm warnings for areas under threat in the Carolinas and Georgia, and a storm surge watch for areas of the Carolinas. Specifics can be found at www.nhc.noaa.gov. Watches, warnings and advisories have also been issued for areas under threat by local National Weather Service Forecast Offices, available at www.weather.gov; hazards include inland tropical storm conditions, high winds, coastal flooding, flooding and flash-flooding. A tornado watch has just been issued for areas under threat in the Carolinas and eastern Virginia.
- This is a large storm, and conditions extend well away from the center of circulation. Ongoing hazards of concern include:
 - Storm surge to produce inundation heights above ground of 2-4 feet for areas of North Carolina.
 - Tropical storm wind conditions over portions of eastern and southeastern Georgia and South Carolina. Conditions will spread northward across central and eastern North Carolina today. Gale- to storm-force winds are also expected for areas of southeastern Virginia, northeastern North Carolina and the Delmarva Peninsula late tonight into early Friday. Downed trees and powerlines with some property and auto damage can be expected.
 - Heavy rainfall will also bring the threat of flooding and flash-flooding for affected areas,

with amounts of 4-7 inches and local amounts to 9 inches expected by the NHC.

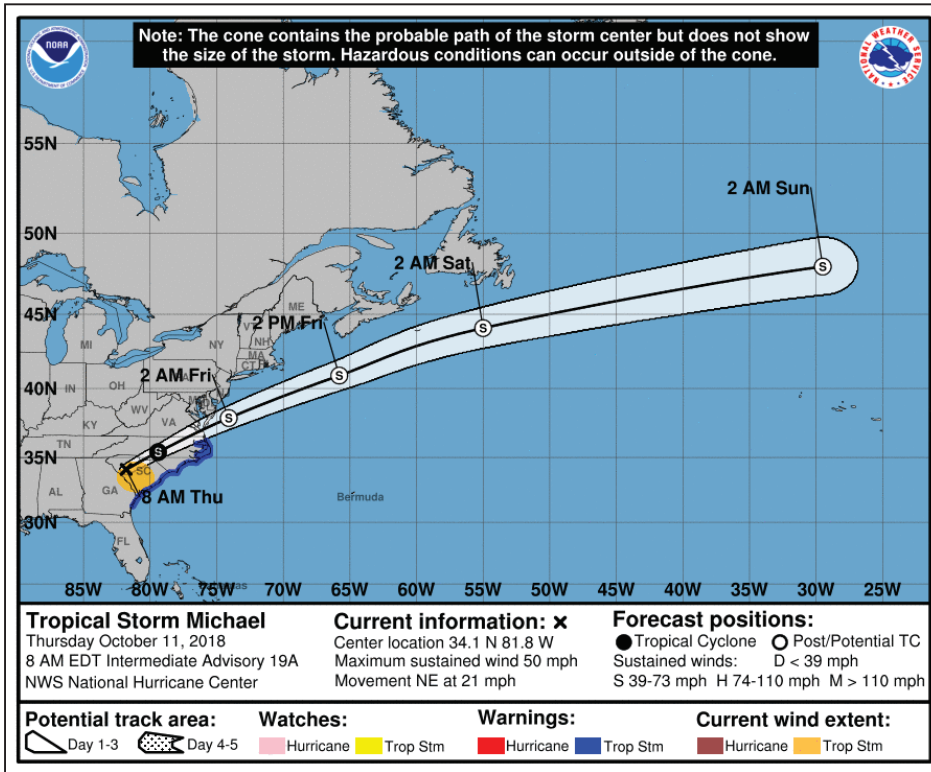
- The threat for isolated tornadoes will continue today for areas of the Carolinas and Virginia.

Key Messages From The NHC

1. Heavy rainfall from Michael could produce life-threatening flash flooding over portions of Georgia, the Carolinas, and southeastern Virginia.
2. Tropical storm conditions will continue to affect portions of the southeast U.S. coast from Georgia through North Carolina, and tropical storm warnings remain in effect for these areas.

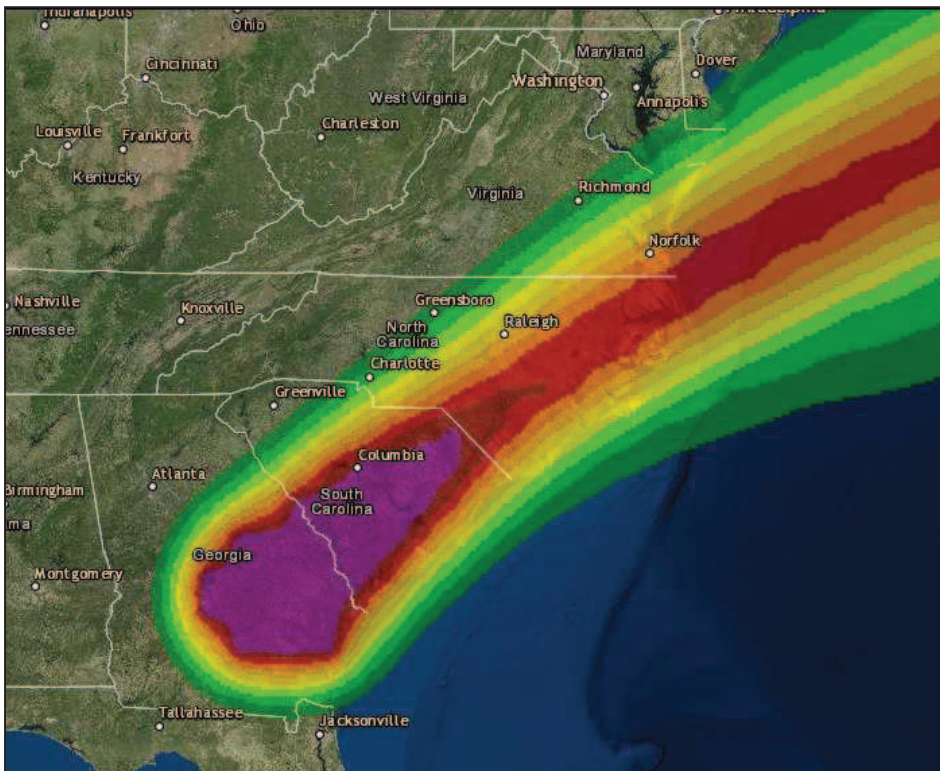
Further Sentinel updates will be issued as materially new guidance comes available. Statements from the National Hurricane Center can be found at www.nhc.noaa.gov. Local National Weather Service watches, warnings and advisories can be found at www.weather.gov (type in the location or zip code, or click on the map).

Local watches and warnings from official meteorological agencies, and statements from local emergency management agencies supersede this update, and should be closely heeded concerning matters of personal safety.



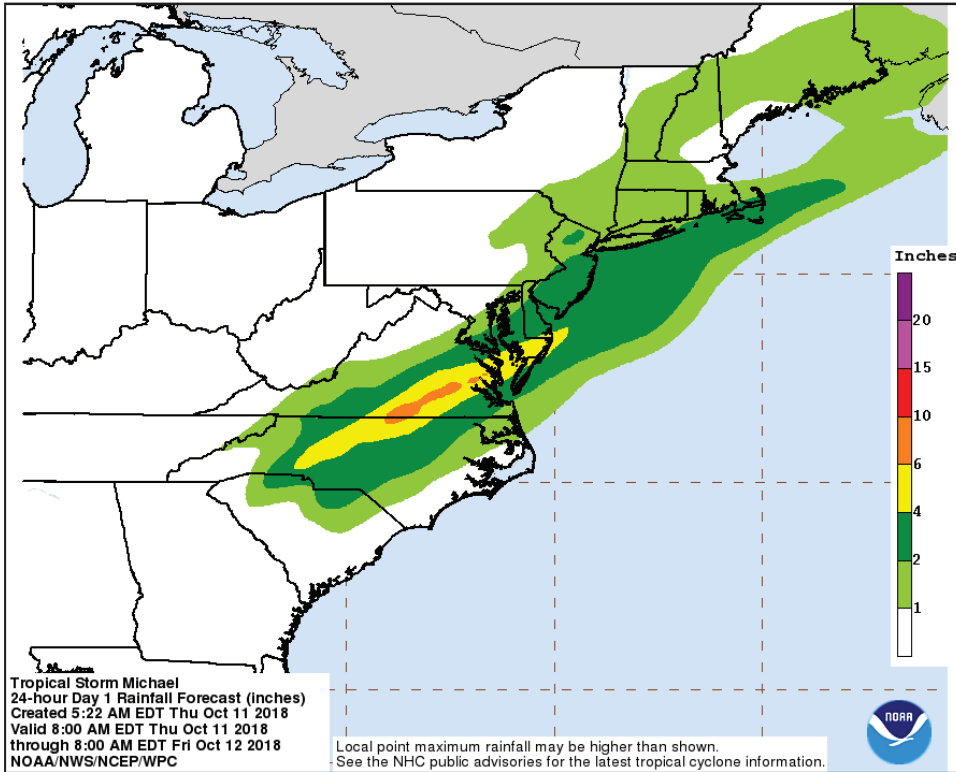
NHC Position and Best Forecast

SOURCE: NOAA/NHC

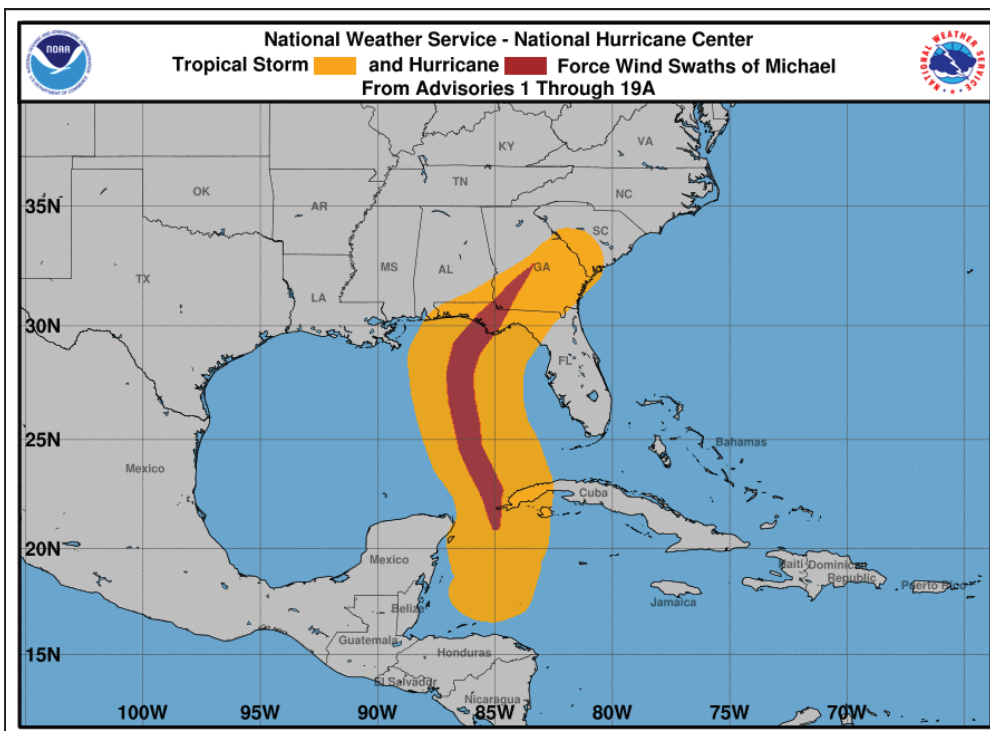


Probability of Tropical-Storm-Force Winds

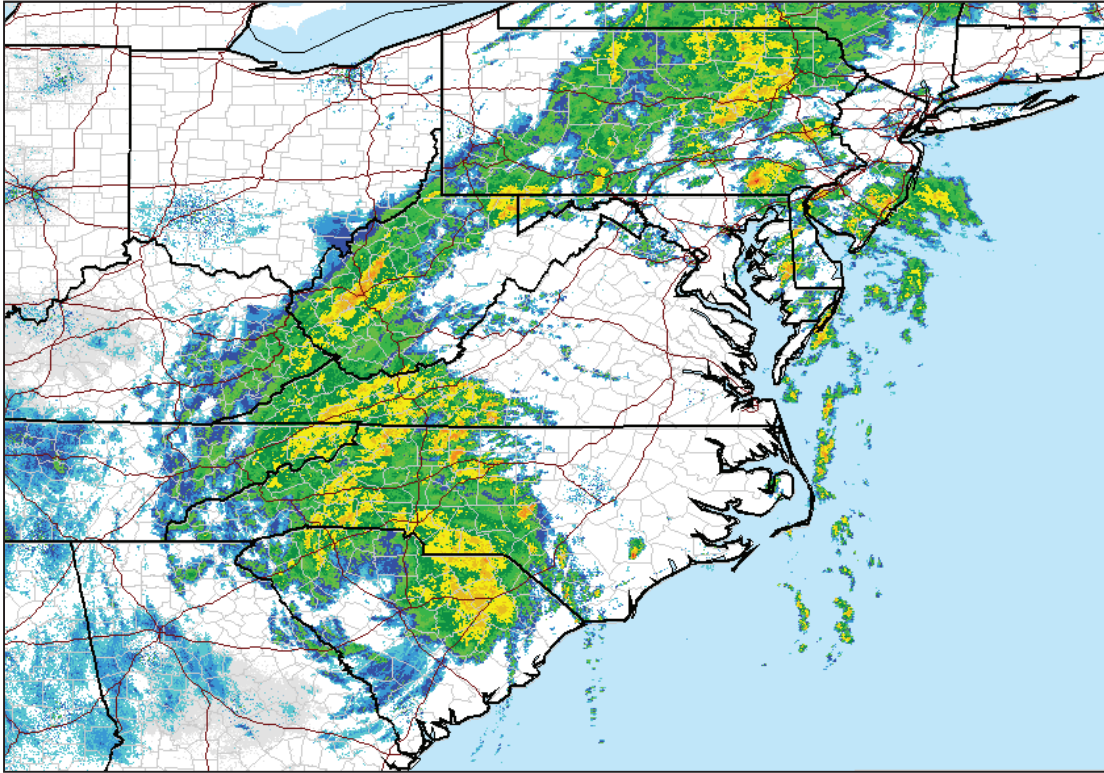
SOURCE: NOAA/NHC



Forecast Rainfall Amounts
 24 Hours Ending 8AM EDT (12 UTC) October 12
 SOURCE: NOAA/NHC



Wind History
 SOURCE: NOAA/NHC



Composite Radar Image 8:58 AM (1258 UTC) October 11
SOURCE: NOAA/NWS

Guy Carpenter & Company, LLC provides this report for general information only. The information contained herein is based on sources we believe reliable, but we do not guarantee its accuracy, and it should be understood to be general insurance/reinsurance information only. Guy Carpenter & Company, LLC makes no representations or warranties, express or implied. The information is not intended to be taken as advice with respect to any individual situation and cannot be relied upon as such. Please consult your insurance/reinsurance advisors with respect to individual coverage issues. Readers are cautioned not to place undue reliance on any historical, current or forward-looking statements. Guy Carpenter & Company, LLC undertakes no obligation to update or revise publicly any historical, current or forward-looking statements, whether as a result of new information, research, future events or otherwise.

This document or any portion of the information it contains may not be copied or reproduced in any form without the permission of Guy Carpenter & Company, LLC, except that clients of Guy Carpenter & Company, LLC need not obtain such permission when using this report for their internal purposes.

The trademarks and service marks contained herein are the property of their respective owners.